

Pensions Administration Benchmarking Club 2013

Bath & North East Somerset Council

COMPARATOR REPORT

Bath
Cheshire West and Chester
Cumbria
Dorset
East Sussex
Gloucestershire
Oxfordshire
Staffordshire
Warwickshire

Cambridgeshire
Cornwall
Devon
East Riding
Edinburgh
Northamptonshire
Rhondda
Surrey
Wiltshire

Computed and printed by:
CIPFA Business Limited
3 Robert Street, London, WC2N 6RL
Tel: 0203 117 1840

PREFACE

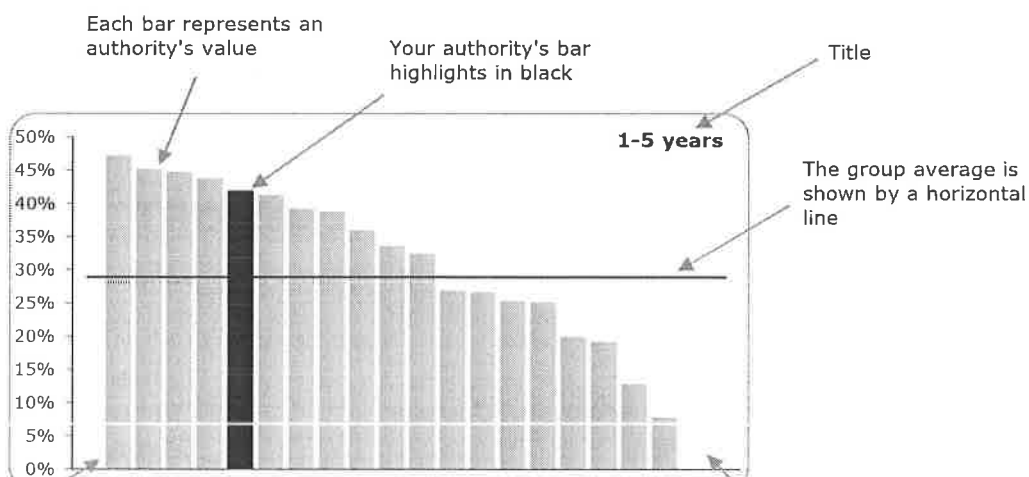
This report compares your data with the group of authorities specified on the title page.

Throughout the report your figures are shown in tables and in graphical form. If you are not familiar with our reports we hope this page will help you to better understand the way we present this data.

Averages: Almost all of our tables and charts compare your figure with a group average. The average is the unweighted mean value for the group. This average value ignores missing data, or data that we have excluded and for this reason sets of averages sometimes do not reconcile precisely.

Charts: We display a large amount of data on charts as this allows us to show the data for the entire group efficiently and gives far more information than a simple average (i.e. range of data, individual authority values etc.). Below we have annotated an example chart to help explain what they are showing.

Bar Charts: These are our standard method of displaying a full set of data



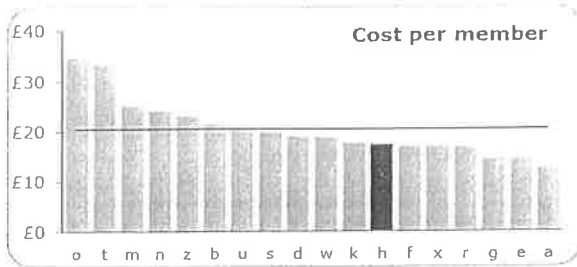
'Missing bars' on the left represent missing data or excluded data and are not included in calculating the average

Staff experience			
	FTE	%	Avg
< 1 year	1.5	10%	9%
1-5 years	6.5	42%	29%
5-10 years	3.5	23%	21%
> 10 yrs	4.0	26%	41%
Total	15.5		

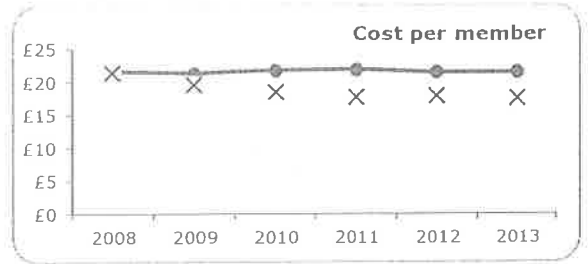
'Missing bars' on the right represent zero values and are included in the average

SECTION 1 - SUMMARY 2013

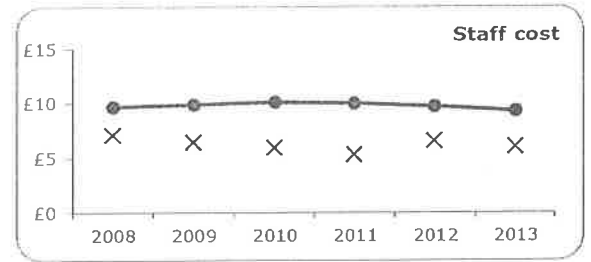
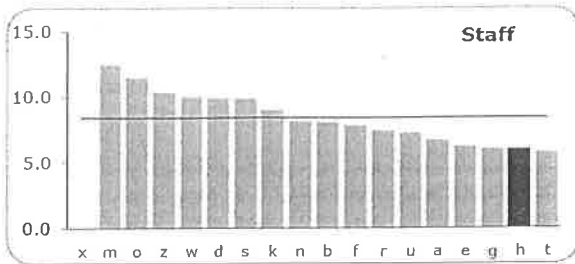
NET COST / MEMBER 2012-13



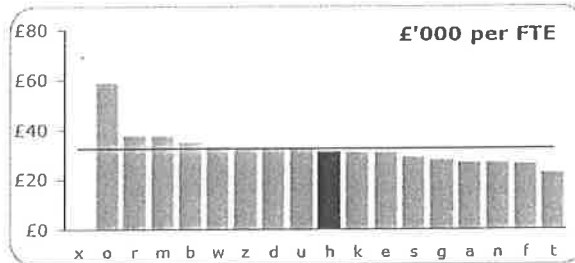
● Club average
X Bath



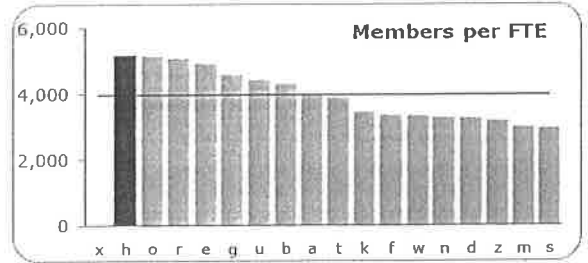
STAFF COST / MEMBER 2012-13



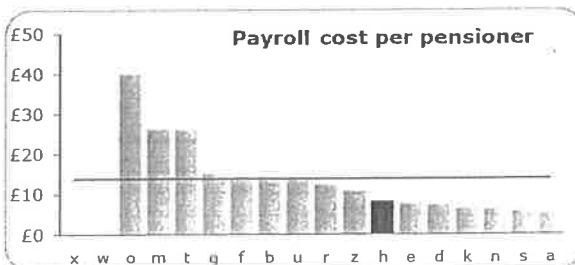
COST £'000 / FTE



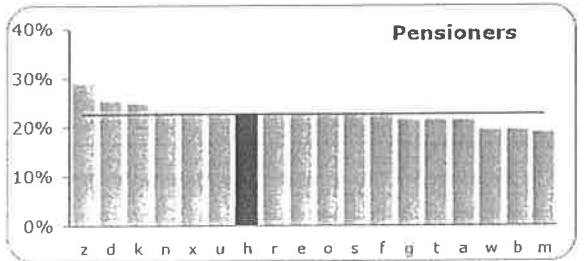
MEMBERS LGPS / ADMIN FTE



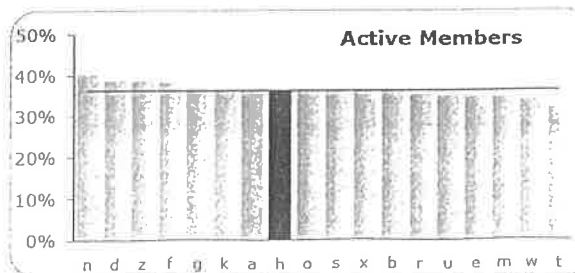
PAYROLL COST / PENSIONER



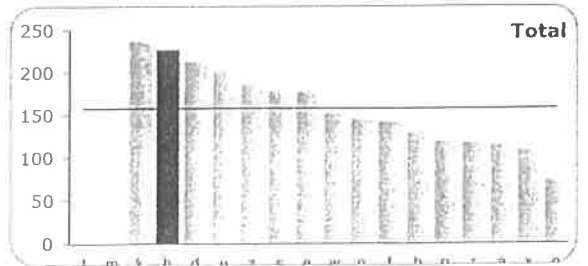
PENSIONERS AS A % MEMBERS



ACTIVES AS A % MEMBERS



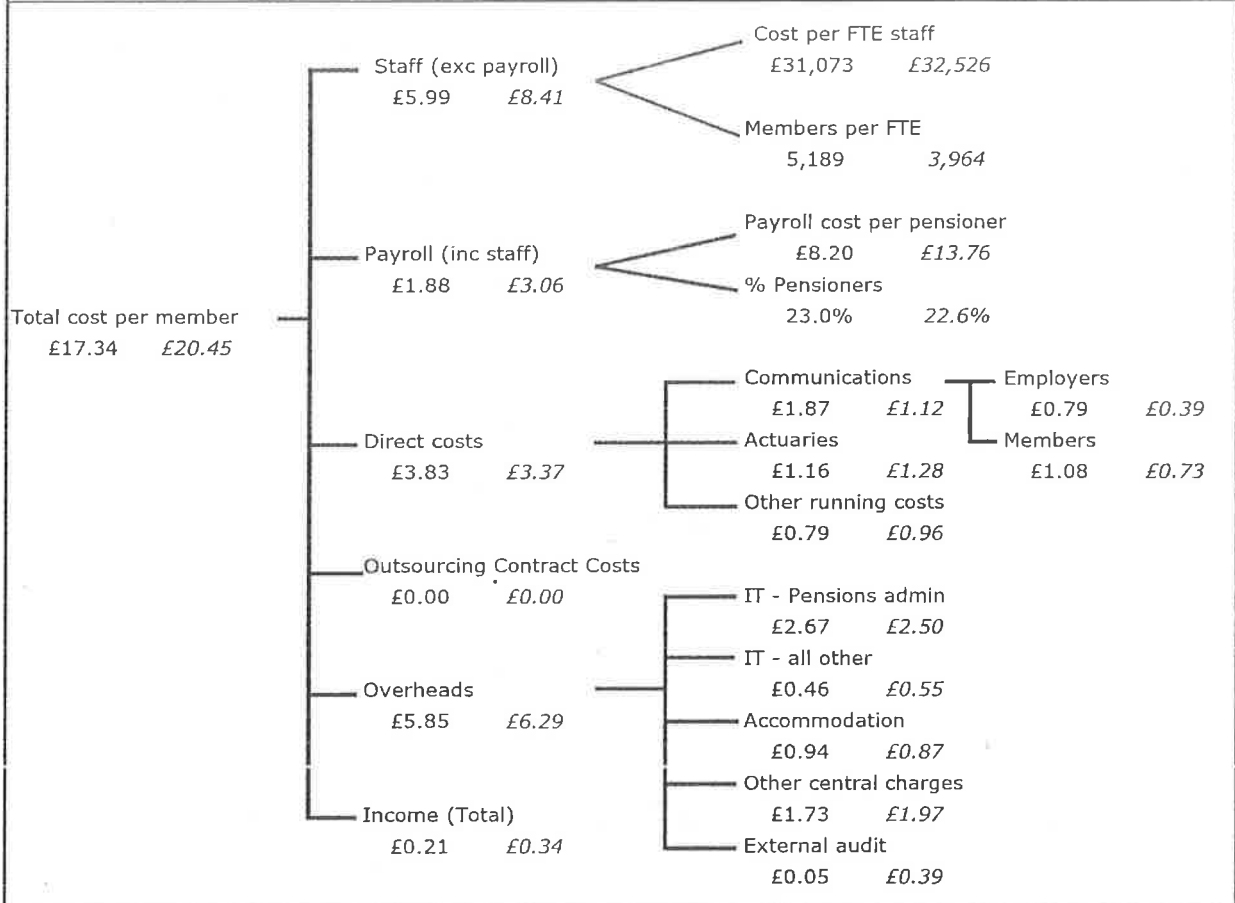
NUMBER OF LGPS EMPLOYERS



SECTION 2 - COST MEASURES

COST/MEMBER TREE 2012-13

This tree diagram analyses the cost per member. For each benchmark two figures are given the first being the authority's cost and the second (in italics) is the group average.



FTE staff	
Pension Section total	39.3
<i>less</i>	
IT staff	3.0
Payroll staff	4.5
Communications staff	2.0
Employing authority work	-
Work for other schemes	1.5
Other work	10.6
Admin of LGPS	17.7

Costs £'000	
	£'000
Pension Section total	12,234
<i>less</i>	
Work for other schemes	10
Employing authority work	-
Other work	10,631
Admin of LGPS	1,593

Scheme membership	
	No.
Active full-time	12,301
Active part-time	20,976
Active Elected members	87
Active total	33,364
Deferred - Staff	31,694
Deferred - Elected Members	32
Pensioners	21,088
Dependants	3,545
Frozen refunds	2,128
Leavers unprocessed	-
Total	91,851

Admin of LGPS costs	
	£'000
Staff - administration	550
Staff - payroll	77
Payroll	96
Communications (Total)	172
Actuaries	107
External audit	5
Outsourcing contract costs	-
Other running costs	73
IT - Pensions admin	245
IT - All other	42
Accommodation	86
Other central charges	159
Income - Members	8
Income - Employers	0
Total	1,593